

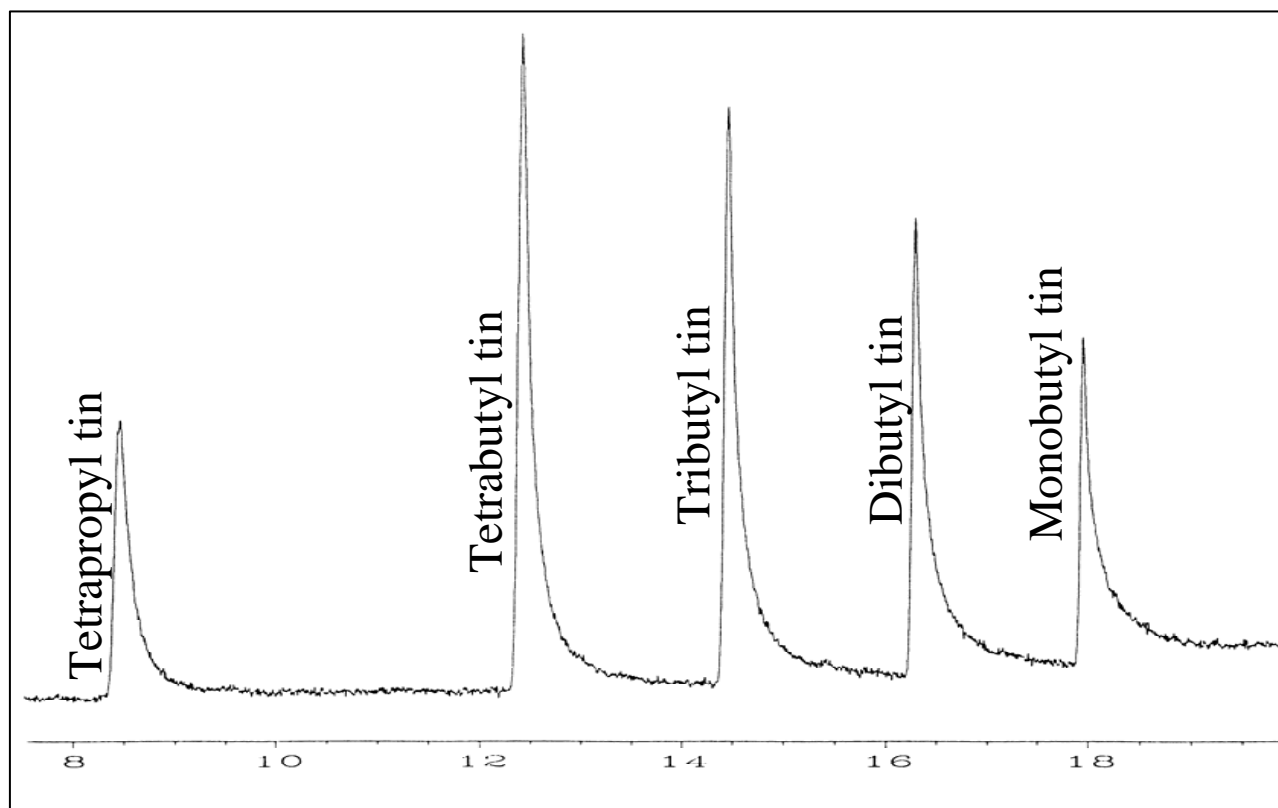
Analysis with the Pulsed Flame Photometric Detector (PFPD)

Non-Standard Applications



Organo-tin Standard

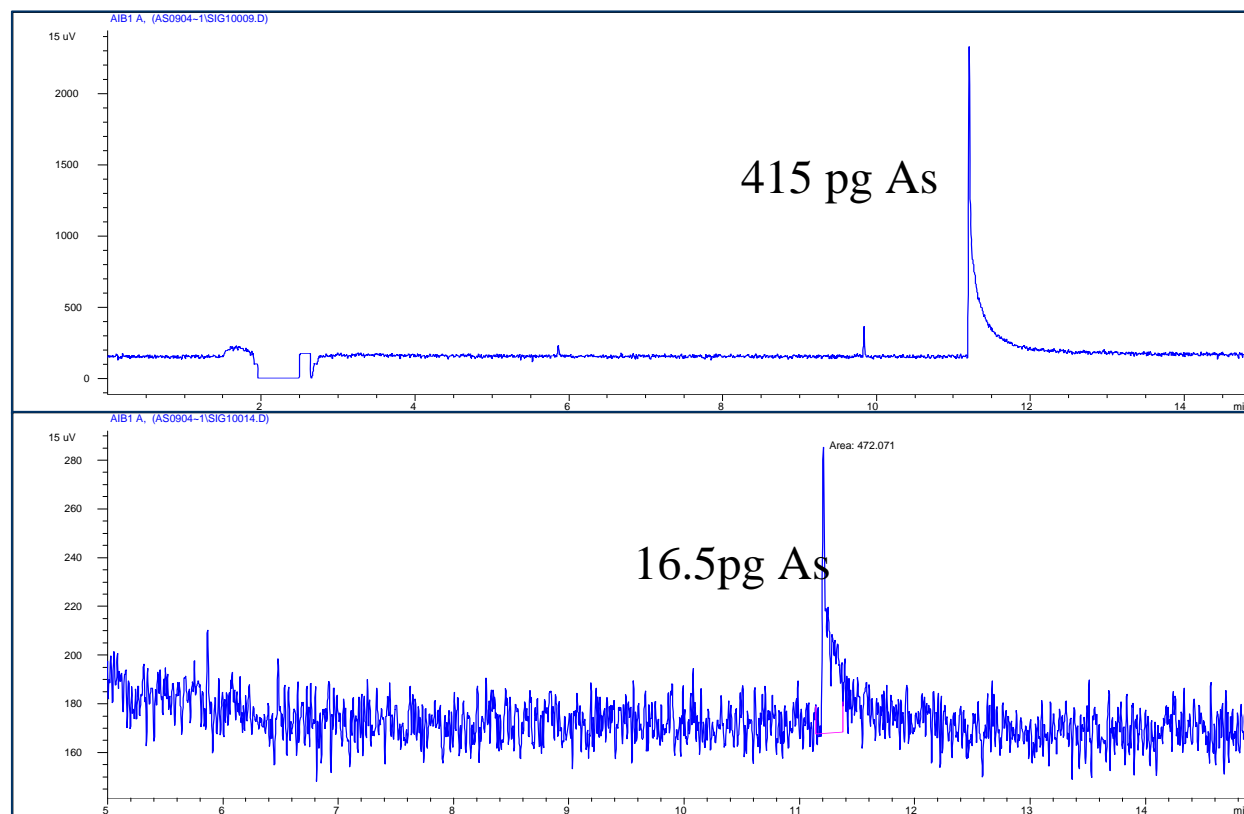
- Rtx-35 column, ramped oven program
- 5.0 pg Sn on column



Chromatogram courtesy of Restek

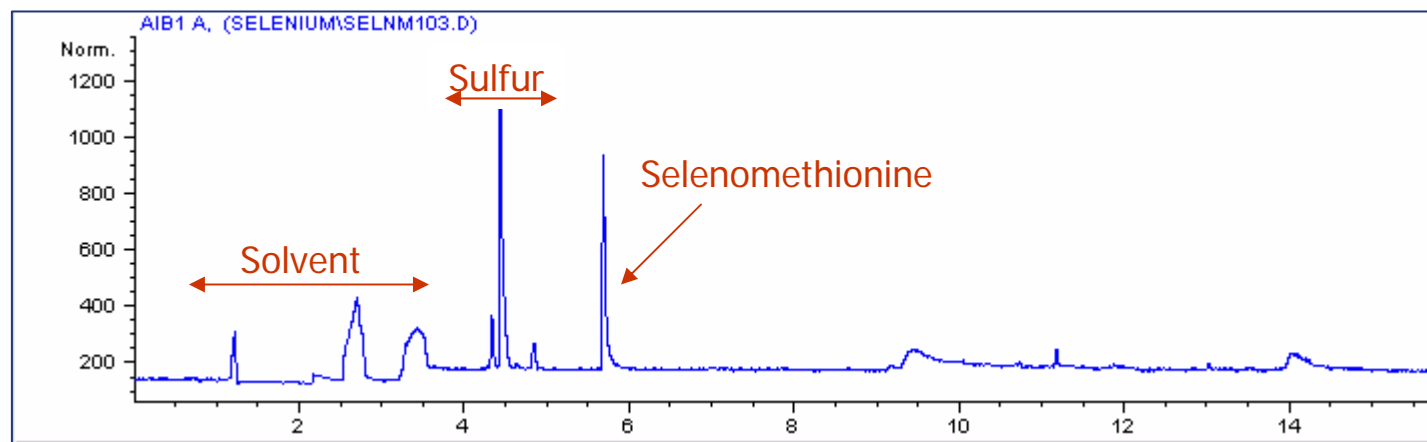
Arsenic Standard

- 1- μ L injection of triphenylarsine
- WG-345 optical filter in PFPD
- 300°C detector temperature



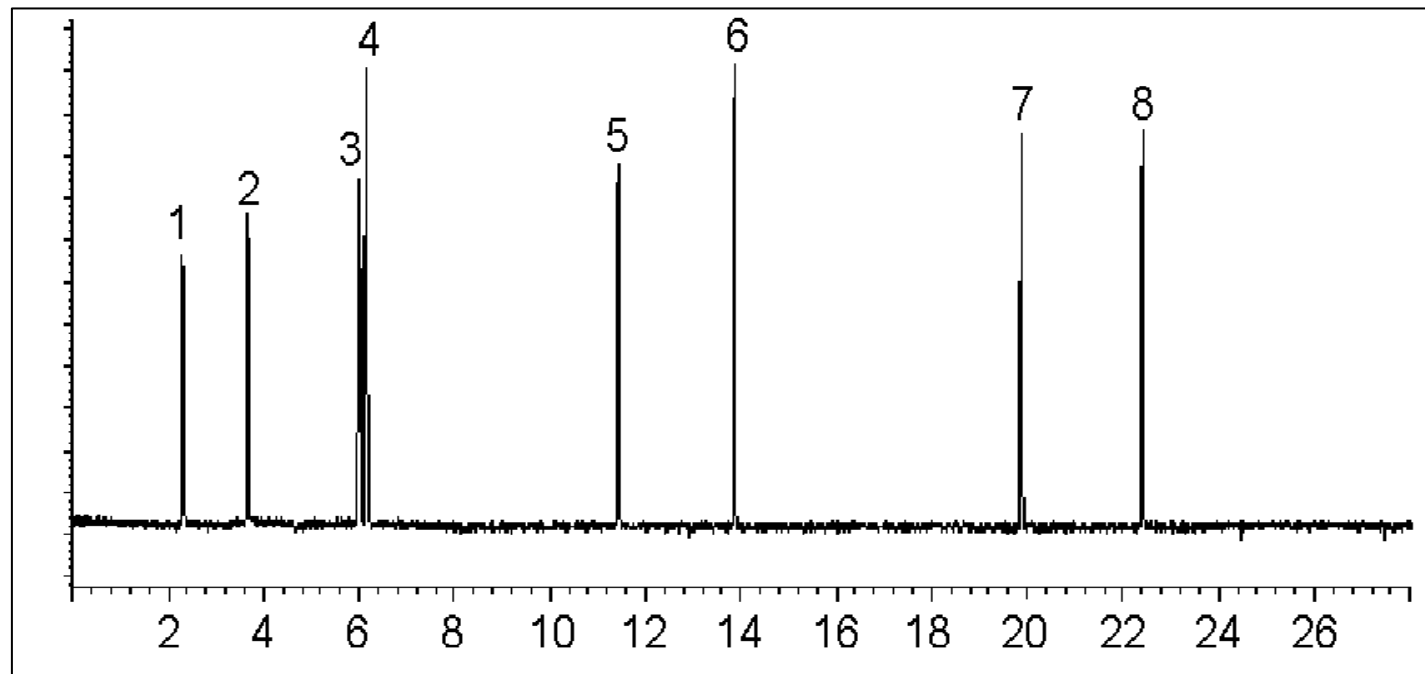
Selenium Standard

- 4 ppm Se as selenomethionine in chloroform
- 1- μ L splitless injection
- DB-5MS column; ramped oven program



Reduced Sulfur in Pulp Mill Effluent

200 $\mu\text{g S/L}$ aqueous standard



Chromatogram courtesy of NCASI

CW Agent Detection with PFPD

