

# ANALYSIS OF CO<sub>2</sub>, H<sub>2</sub>S, COS, SO<sub>2</sub>, CH<sub>3</sub>SH IN NITROGEN

**Technique :** Micro-GC

**Column :** PoraPlot U 8m

**Carrier gas :** Helium

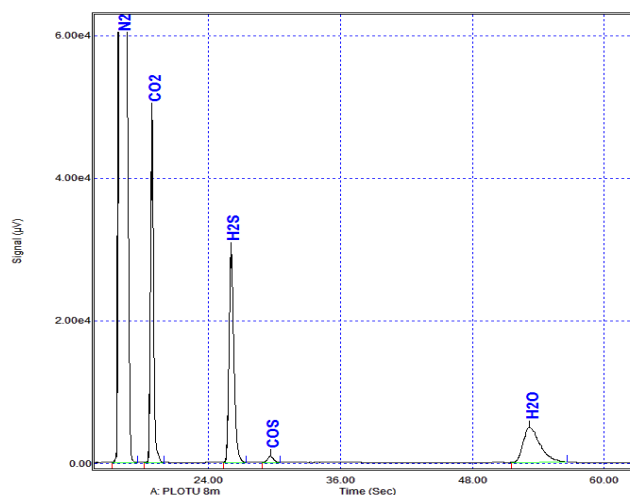
**Injector :** Variable volume

**Column temperature :** 130°C

**Injection time :** 90°C, 70 ms

**Column pressure :** 28 psi

**μTCD sensitivity :** Standard



Compound	Concentration (ppm <sub>v</sub> )
CO <sub>2</sub>	2 %
H <sub>2</sub> S	2 %
COS	500 ppm

**Technique :** Micro-GC

**Column :** PoraPlot U 10m

**Carrier gas :** Helium

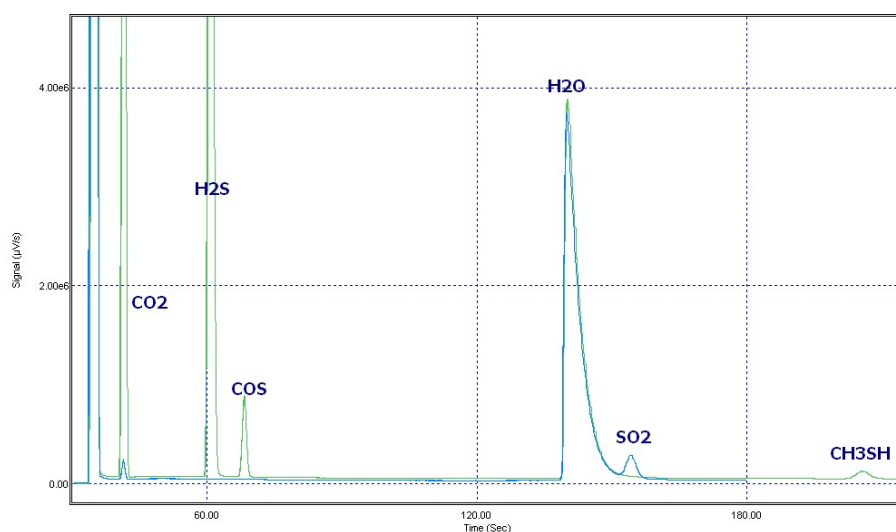
**Injector :** Variable volume

**Column temperature :** 100°C

**Injection time :** 90°C, 100 ms

**Column pressure :** 28 psi

**μTCD sensitivity :** Standard



More information : [www.sra-instruments.com](http://www.sra-instruments.com)