

# CHLORO-FLUORO-CARBONS ANALYSIS

**Technique :** Micro-GC

**Column :** OV-1

**Carrier gas :** Helium

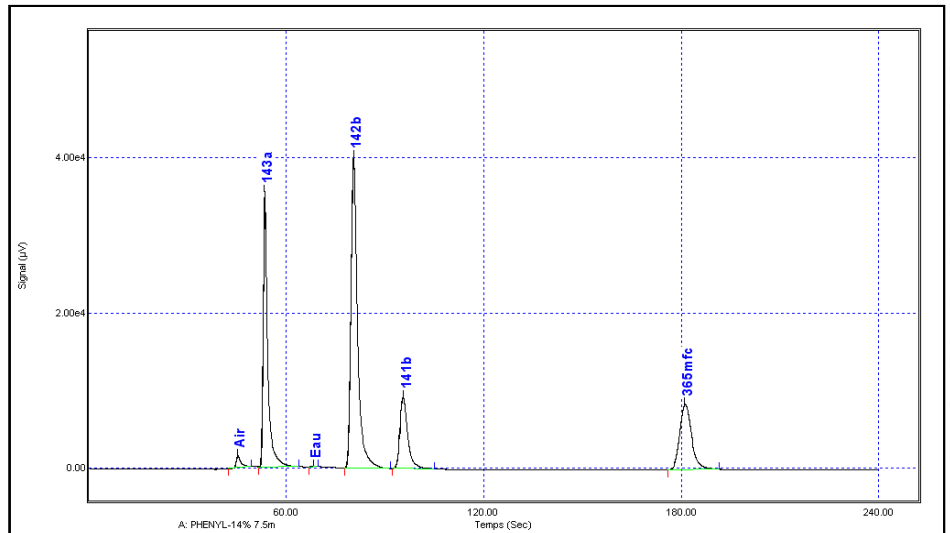
**Injector :** Variable volume

**Column temperature :** 110°C

**Injection time :** 5 ms

**Column pressure :** 20 psi

**μTCD sensitivity :** Standard



**Technique :** Micro-GC

**Column :** Al<sub>2</sub>O<sub>3</sub>

**Carrier gas :** Helium

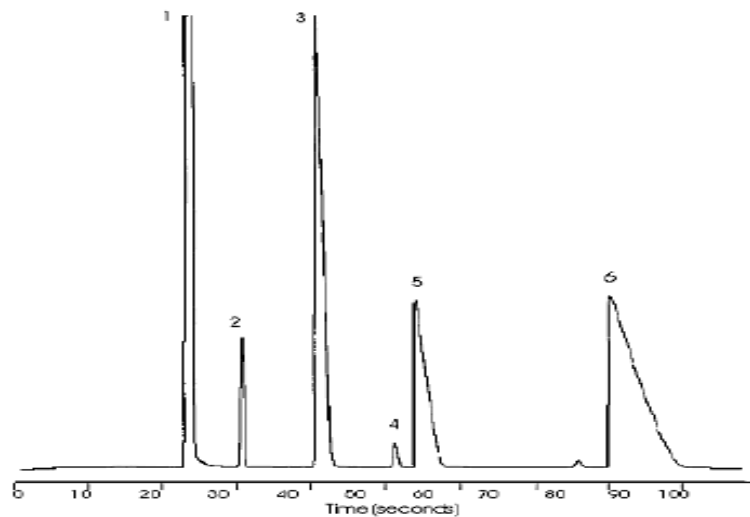
**Injector :** Variable volume

**Column temperature :** 60°C

**Injection time :** 70°C, 50 ms

**Column pressure :** 30 psi

**μTCD sensitivity :** Standard



Peak identification	1	Air
	2	Fréon 12
	3	Fréon 22
	4	Fréon 134a
	5	Fréon 152a
	6	Fréon 124

*More information : [www.sra-instruments.com](http://www.sra-instruments.com)*