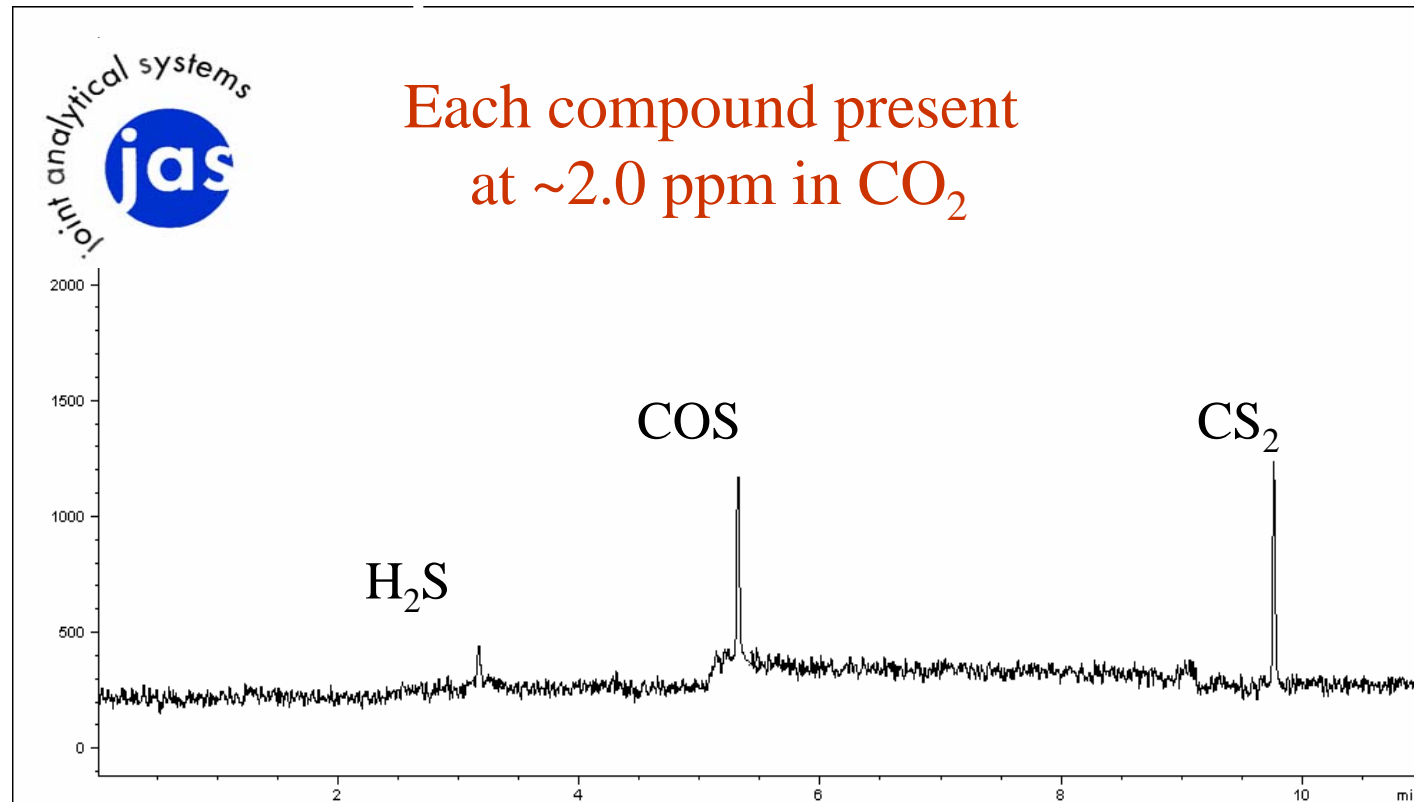


# Analysis with the Pulsed Flame Photometric Detector (PFPD)

## Food and Beverage Applications

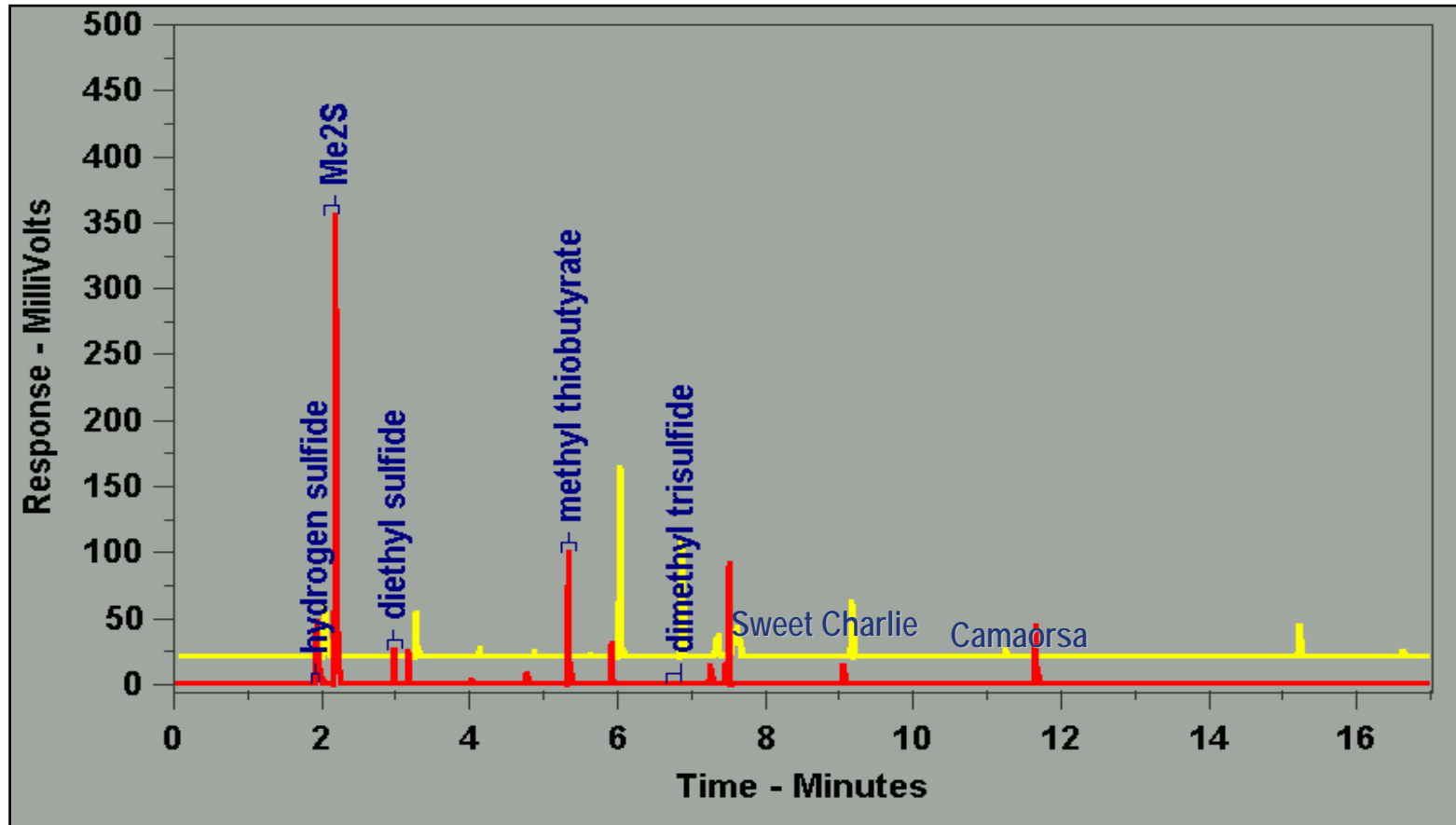


# Sulfur in Beverage Grade CO<sub>2</sub>



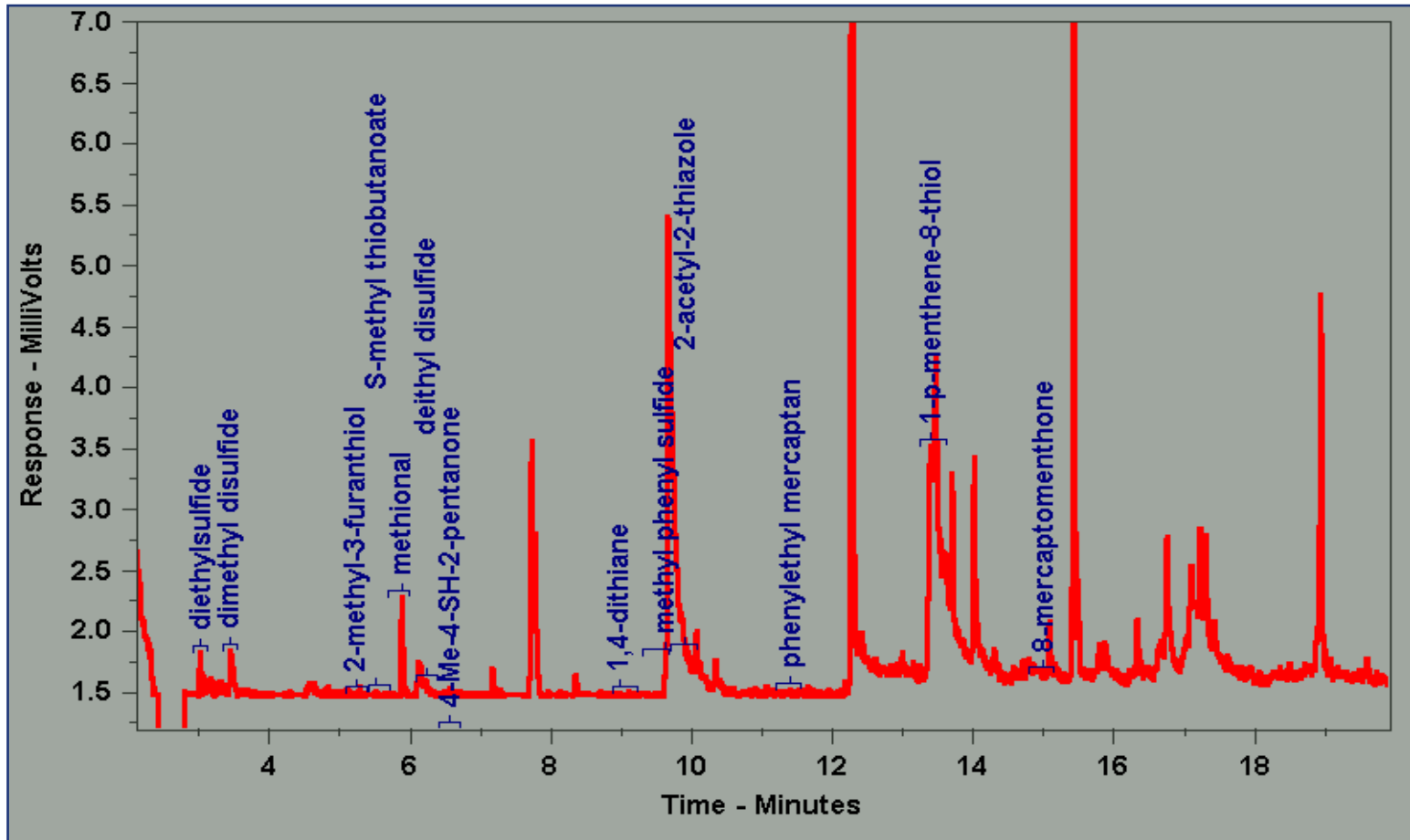
Chromatogram courtesy of JAS

# Sulfur in Strawberry



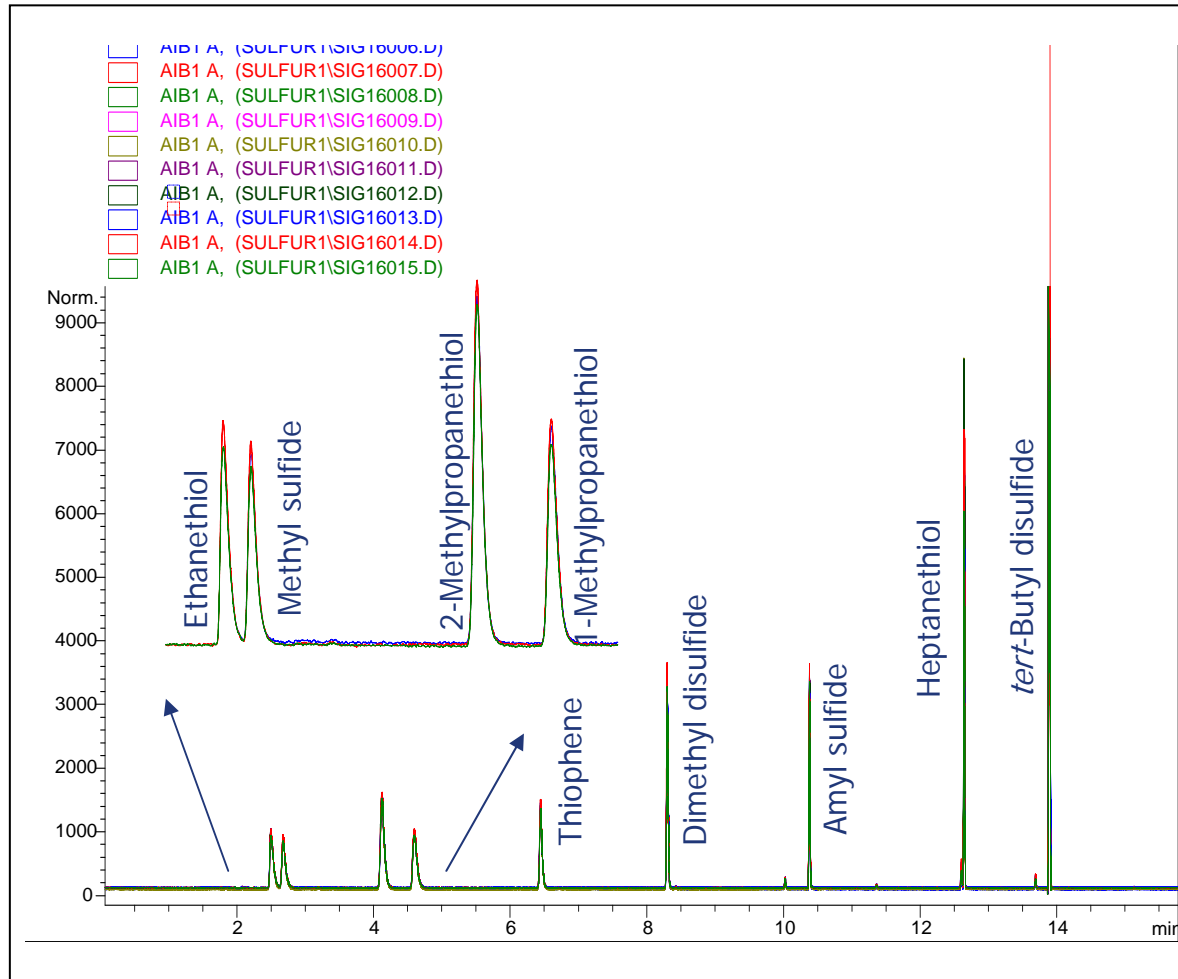
Chromatogram courtesy of Russell Rouseff, PhD, at University of Florida

# Sulfur in Grapefruit



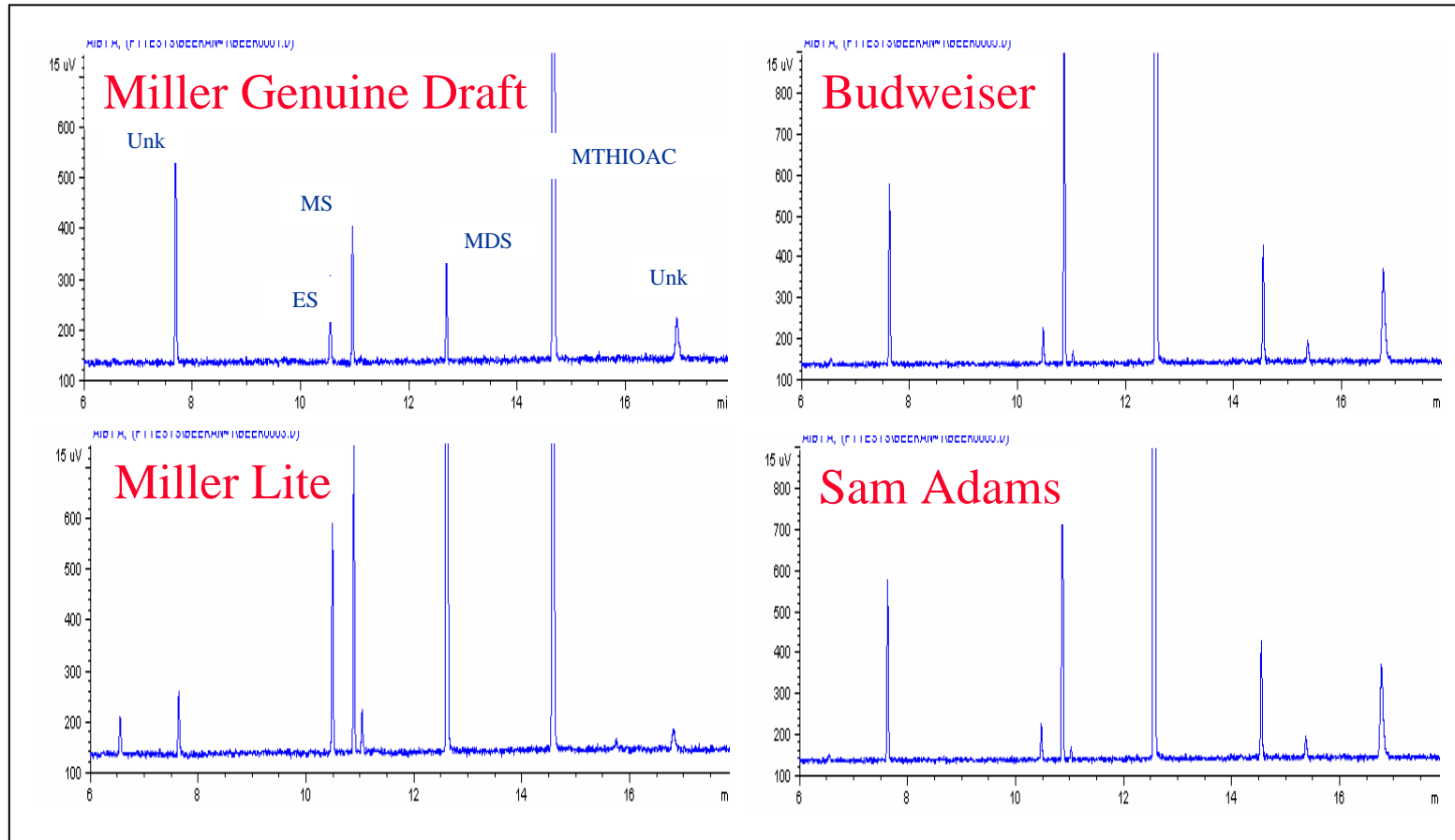
Chromatogram courtesy of Russell Rouseff, PhD, at University of Florida

# Sulfur in Beer



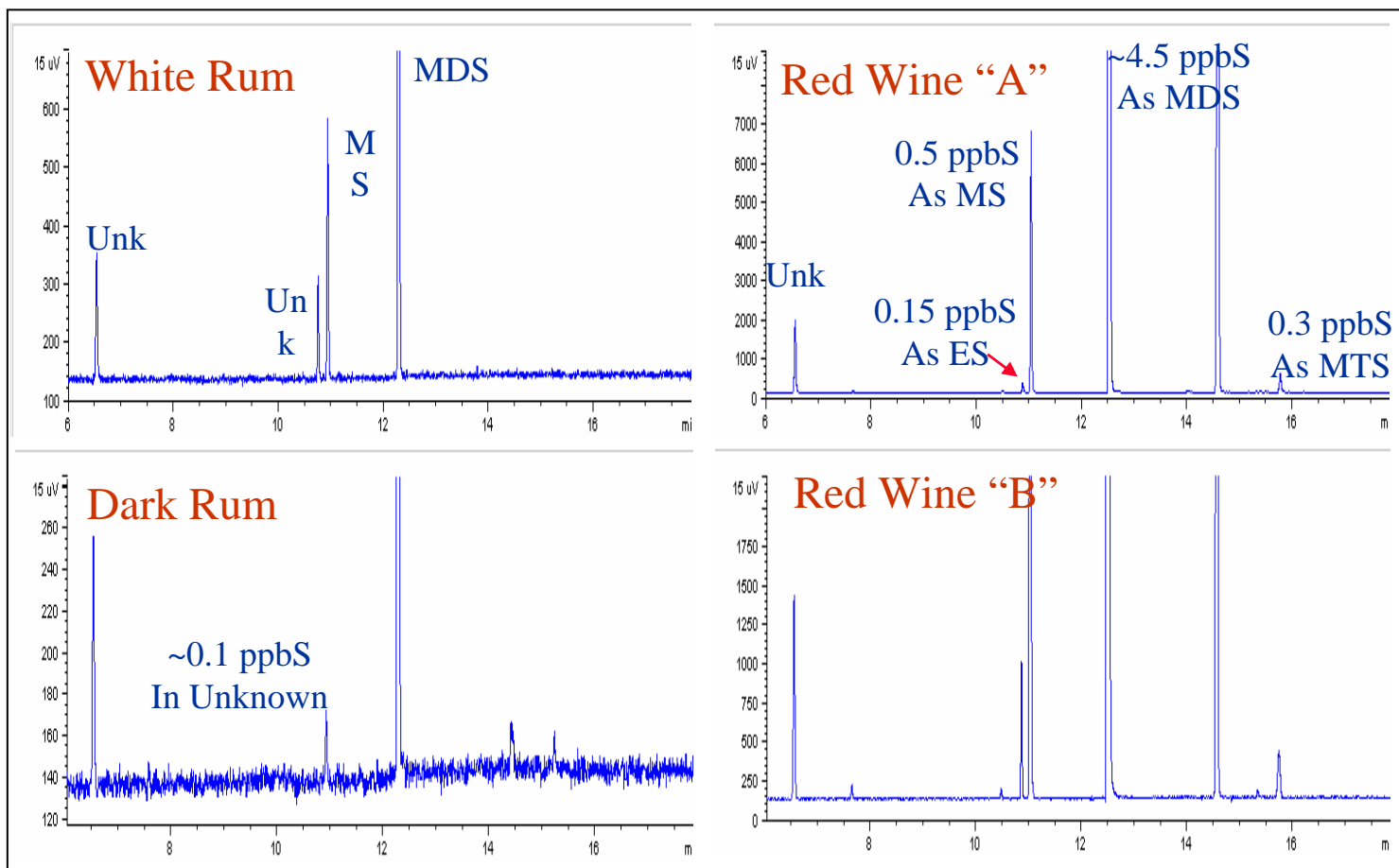
PFPD  
repeatability  
at 10 ppb  
better than  
10%

# Sulfur in Beer

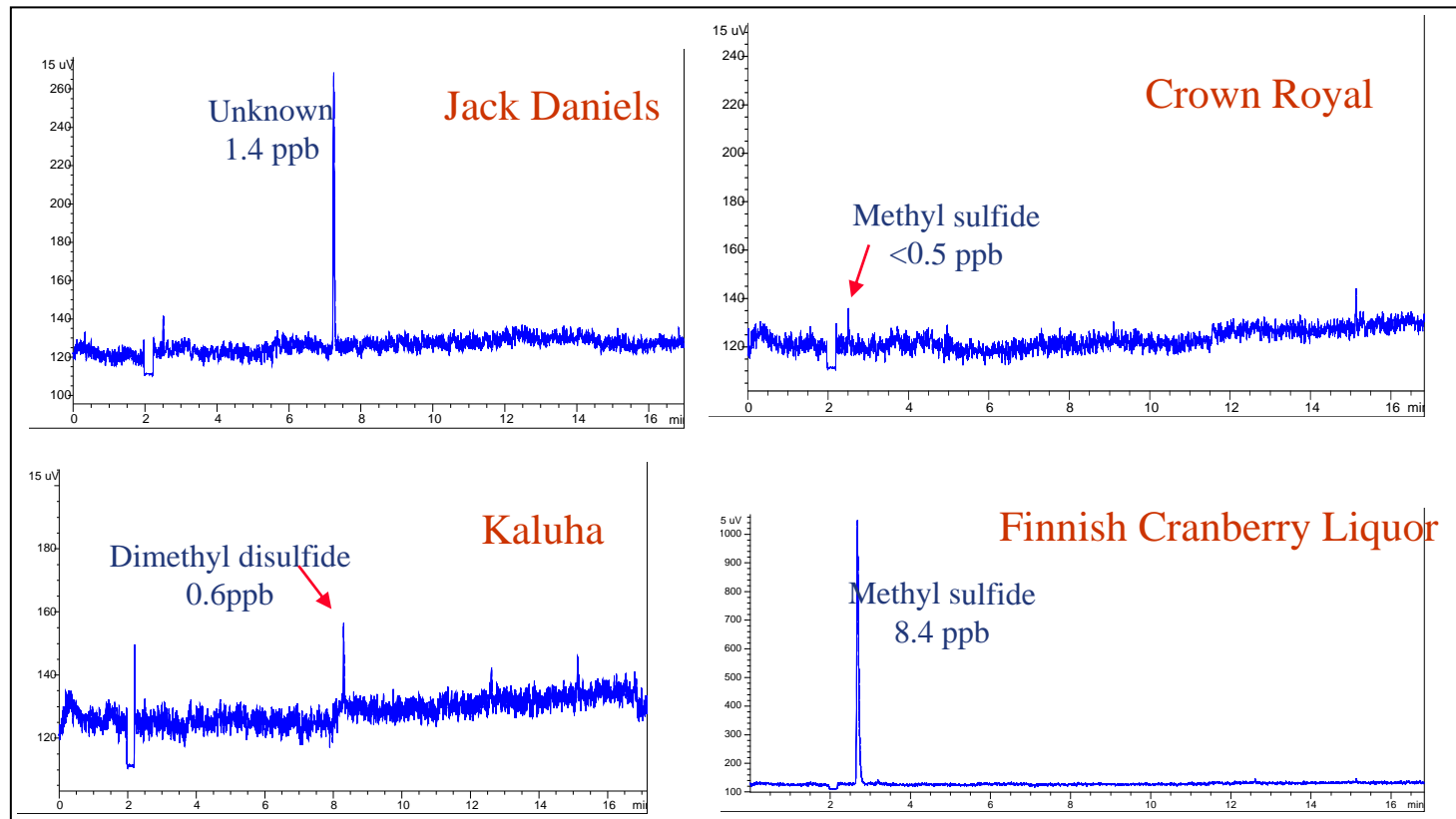


Sulfur concentrations in beers tested ranged from 0.1 ppbS to ~4 ppbS

# Sulfur in Wine and Rum



# Sulfur in Liquors





# Sulfur in Coffee & Tea

